

FOR LEASE

Bay 104 & 105, 2850 107th Avenue SE

4,522 Square Feet



Property Description

Two 2,261 Sq. Ft. Industrial Bays

- Newer industrial small bay development in Douglasglen
- Close proximity to amenities and retail services
- Great access to Deerfoot Trail
- Bays can be leased separately or together for a total of 4,522 square feet

For information and options on this property contact:

Luke Stiles

403-681-7810

lstyles@adventcommercial.com

Advent Commercial
Real Estate Group
833 34th Avenue SE
Calgary, Alberta T2G 4Y9
T. 403-984-9800
F. 403-984-9810

ADVENT
COMMERCIAL

REAL ESTATE GROUP

This brochure is intended for information purposes only and should not be relied upon for accurate factual information by the recipients hereof. The information contained herein is based on information which Advent Commercial deems reliable, however, Advent Commercial assumes no responsibility for the degree of accuracy of such information, nor does Advent Commercial represent or warrant the information contained herein. Recipients hereof should conduct their own investigations to determine the accuracy of information contained herein., including confirmation of land use. The information contained herein is subject to change without notice.

FOR LEASE

Bay 104 & 105, 2850 107th Avenue SE

Aerial



--- FUTURE SE LRT
■ PARK & RIDE

Property Details

Net Rent:	\$12.00 - \$13.00
Op Costs:	\$4.84 psf (est.2012)
Zoning:	I-G
Loading:	One 12' x 14' DI door per bay
Power:	100 Amp (TBV) per bay
Ceiling Height	22'
Bay Dimensions:	25' X 90' approx.

Loading Area



For information and options on this property contact:

Luke Stiles
403-681-7810

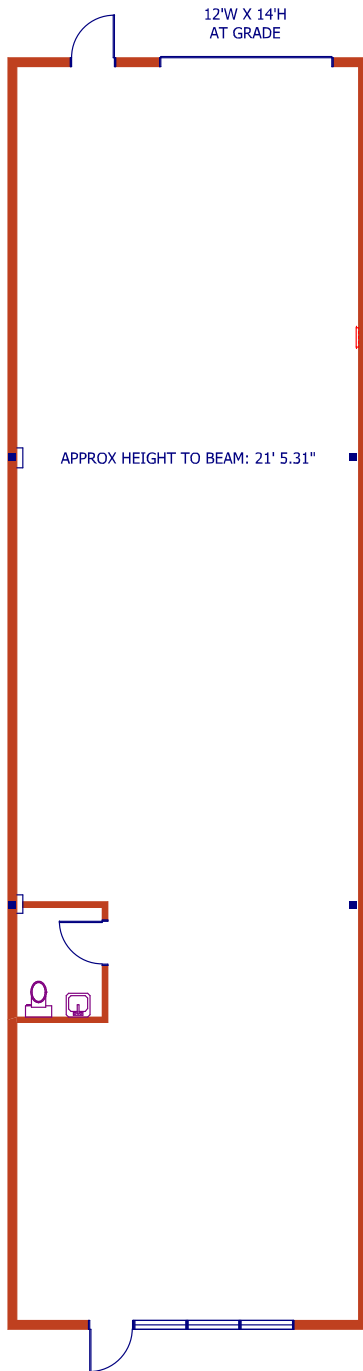
ADVENT
COMMERCIAL
REAL ESTATE GROUP

833 34th Avenue SE
Calgary, Alberta T2G 4Y9
Phone: 403-984-9800
Fax: 403-984-9810
www.adventcommercial.com

FOR LEASE

Bay 104 & 105, 2850 107th Avenue SE

Floor Plan

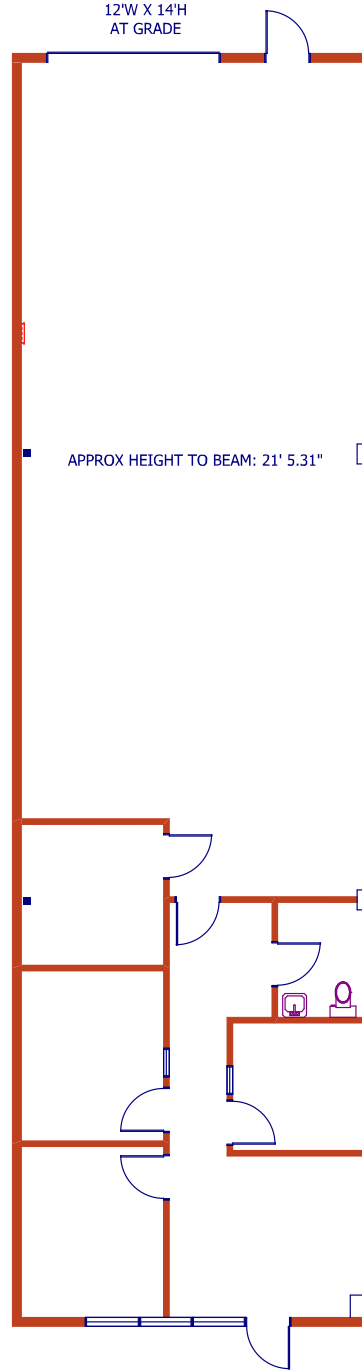


Bay 105

Warehouse: 2,261 sq. ft.

Loading: 1 DI Door

Available: April 1st, 2012



Bay 104

Office: 800 sq. ft. (approx)

Warehouse: 1,461 sq. ft. (approx)

Loading: 1 DI Door

Available: Immediately

For information and options on this property contact:

Luke Stiles
403-681-7810

ADVENT
COMMERCIAL

REAL ESTATE GROUP

833 34th Avenue SE
Calgary, Alberta T2G 4Y9
Phone: 403-984-9800
Fax: 403-984-9810
www.adventcommercial.com